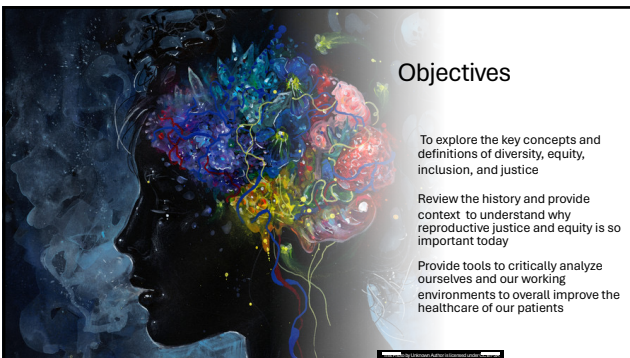




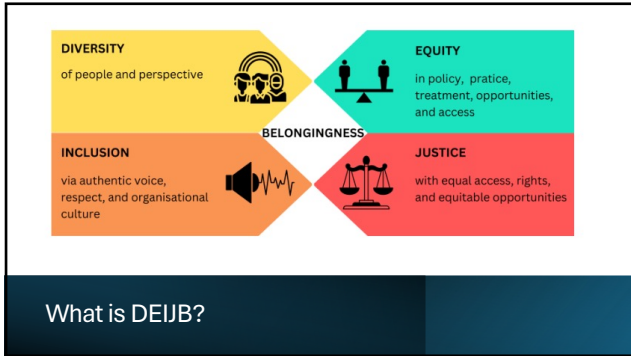
1



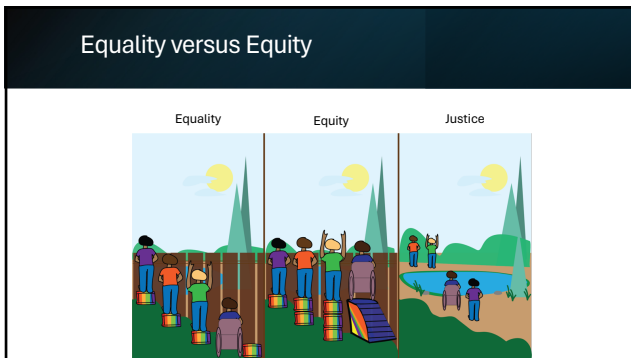
2



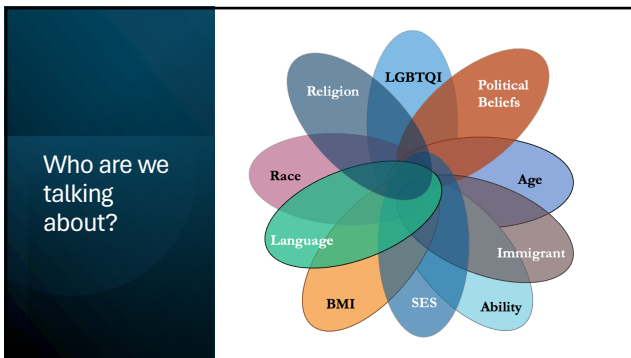
3



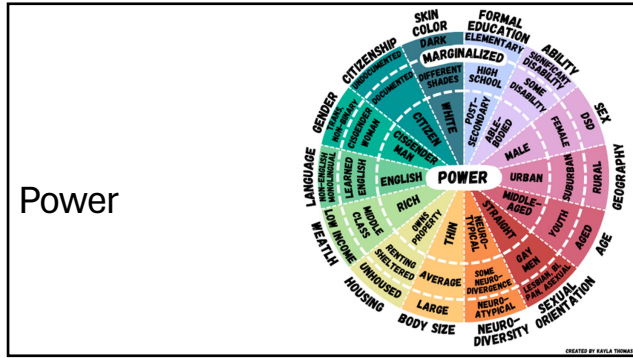
4



5



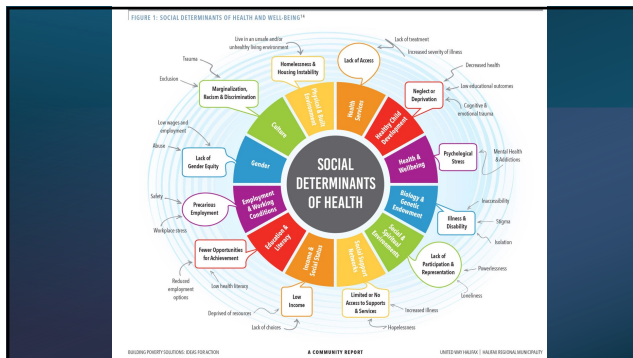
6



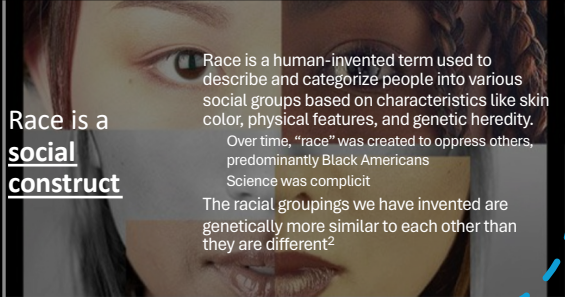
7



8



9



Race is a social construct

Race is a human-invented term used to describe and categorize people into various social groups based on characteristics like skin color, physical features, and genetic heredity.

Over time, "race" was created to oppress others, predominantly Black Americans
Science was complicit

The racial groupings we have invented are genetically more similar to each other than they are different²

More on Race: Are We So Different is on view at the Natural History Museum Natural History Museum

10

Reckoning

Nuriddin A. Mooney G. White AB. Reckoning with histories of medical racism and violence in the USA. *Lancet*. 2020 Oct 3;396(10216):949-951. doi: 10.1016/S0140-6736(20)32022-8. PMID: 3303829; PMCID: PMC7529391.



1790 founding father and professor at University of Pennsylvania Benjamin Rush taught that **blackness was a form of leprosy**.

Medical schools relied on enslaved Black bodies as "anatomical material" and recruited students in southern states by advertising its abundance.

The Virginia Medical College employed a Black man named Chris Baker as its "resurrectionist" to steal freshly buried Black bodies to use for dissection.

John Brown, an enslaved man, was "lent" to Dr. Thomas Hamilton to experiment on to determine the **thickness of Black skin**.

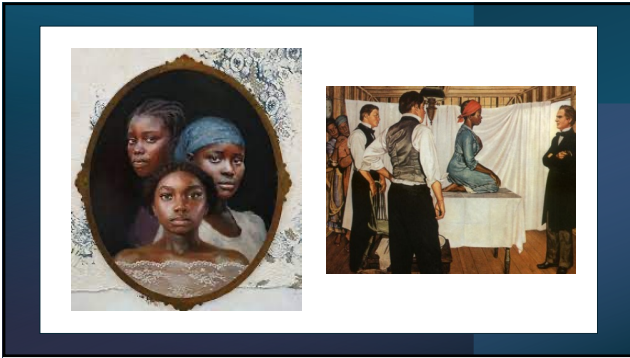
1875 Essay, Physician Josiah Nott taught that Black people were **immune to tropical disease** such as malaria and yellow fever

ILLUSTRATION BY DIANE EDITH

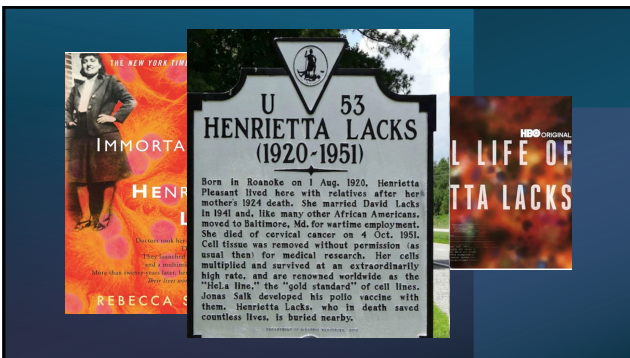
11



12




13



14



15



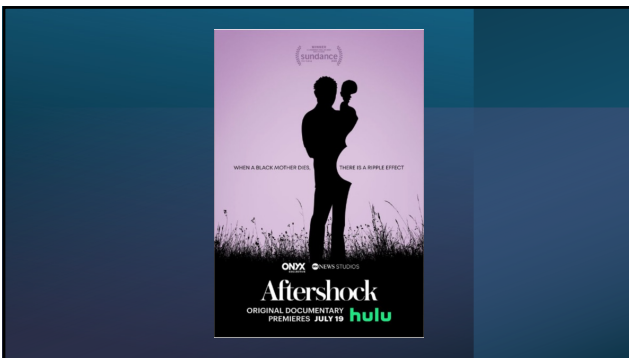
Today

After reports of forced sterilizations in Californian prisons, the state launched an investigation and determined that at least 144 incarcerated women were illegally sterilized between 2005-2013

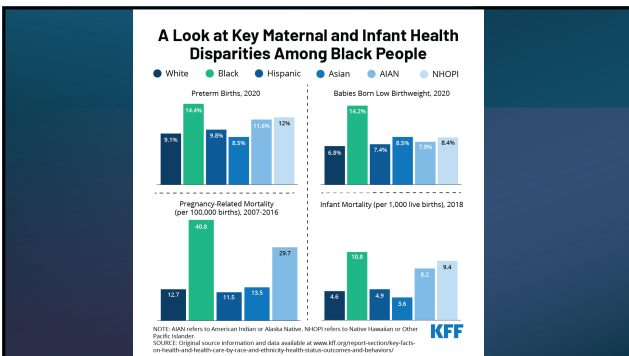
In 2020, allegations by a whistleblower of involuntary hysterectomies in a US Immigration and Customs Enforcement facility are concerning if confirmed.

The disparity in infant mortality between White and Black people in the USA is even higher now than it was in the Antebellum period; hospitals serving predominantly Black and Latinx patients are underfunded.

16



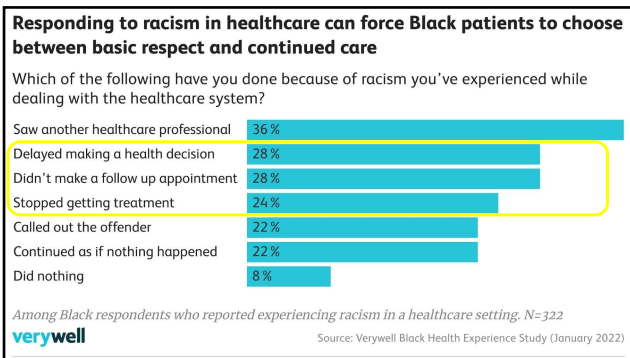
17



18



19



20

VBAC Calculator

VAGINAL BIRTH AFTER CESAREAN

Early Pregnancy Delivery Admission

Maternal age (range 15-50 years):

Height Unit:

inches

centimeters

Height (range 118-191 cm):

Weight Unit:

pounds

kilograms

Preg-pregnancy weight (range 26-206 kg):

Body mass index: kg/m²

Obstetric History:

Previous VBAC:

Arrest disorder indication for prior cesarean?

No:

Treated chronic hypertension?

No:

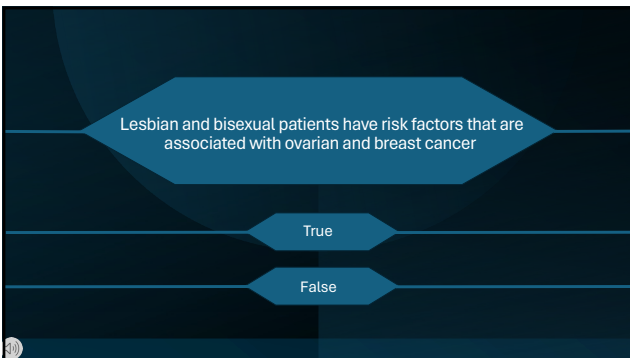
21



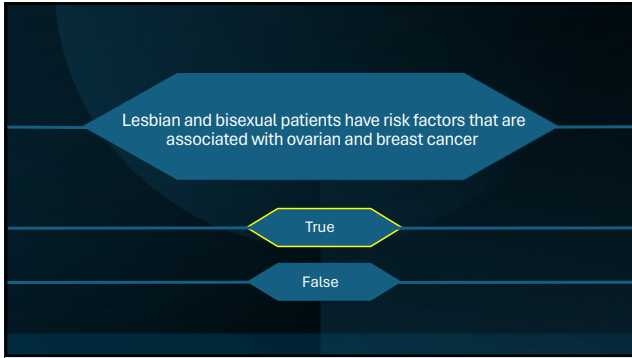
22



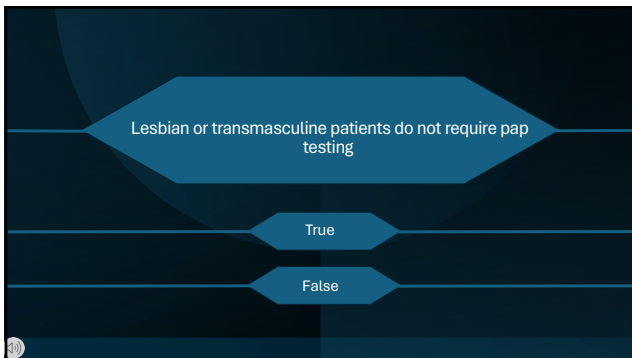
23



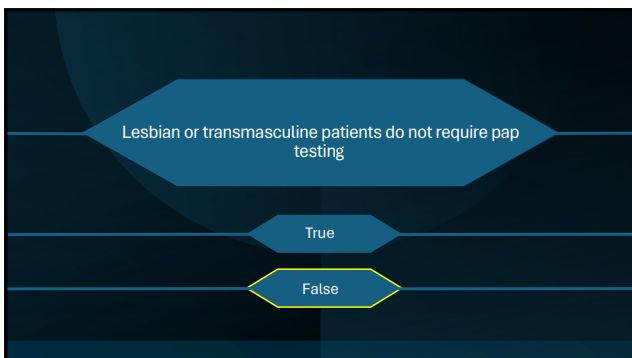
24



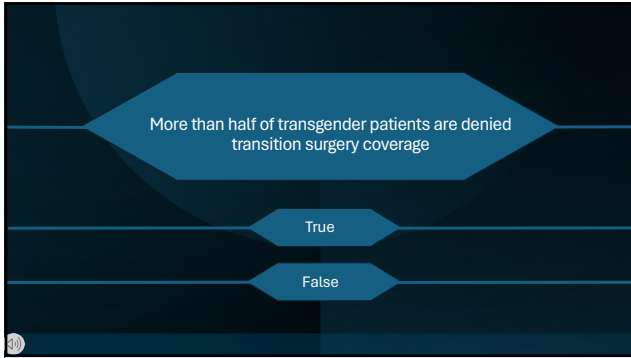
25



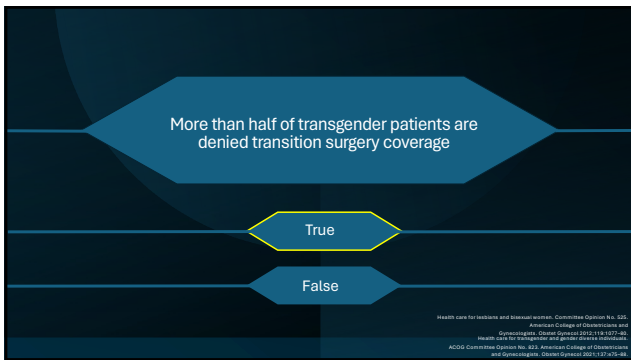
26



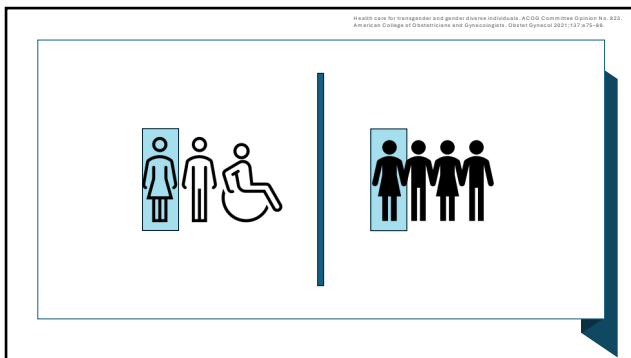
27



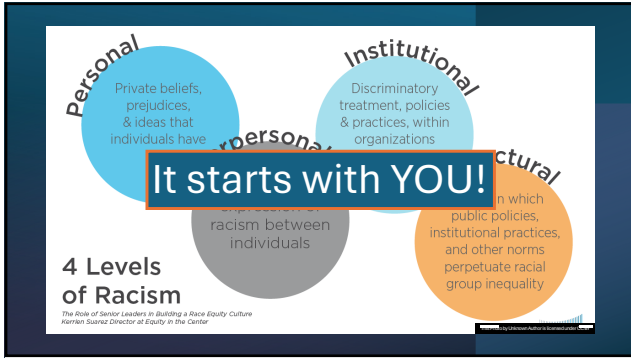
28



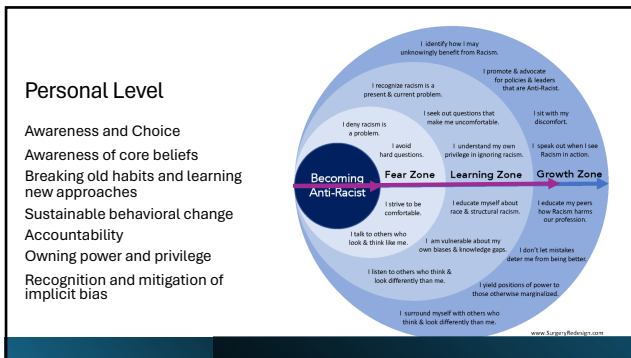
29



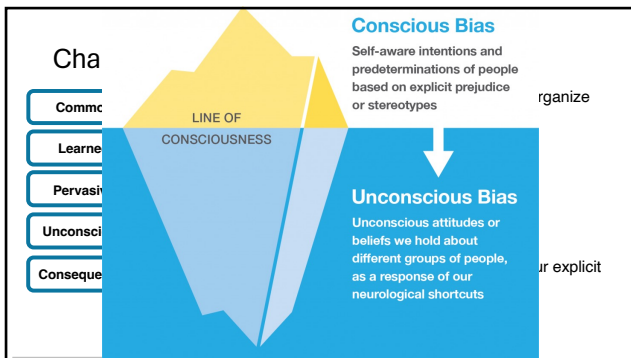
30



31



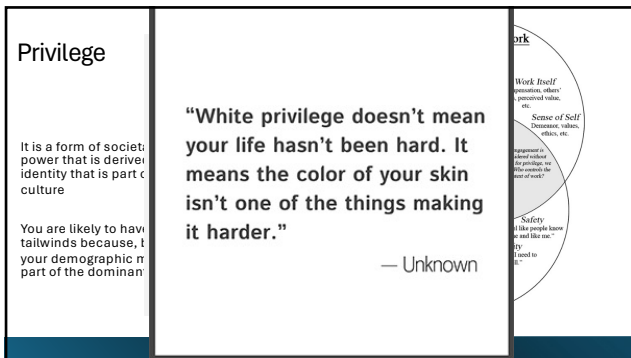
32



33



34



35




36



37


Now what?



- Take a breath**
You can be a good person with positive intentions
- Don't make it about you**
The weight of historical oppression is heavy
- Listen**
Give people space to be heard, it's a gift for someone to share their lived experience with you
- Learn**
Educate yourself
- The sincere apology**
Address the hurtful comment(s) and acknowledge the impact.
Describe what you will do differently

39

Allyship and



SYMPATHY
Feeling

EMPATHY
Feeling & understanding

COMPASSION
Taking Action

ALY
IS TO IDENTIFY PRIVILEGE

TAKING ACTION
WPS TO BE ACTION NO MORE CHANGE

@cambizummaroficial

40



42

Power-Sharing in Patient Care

Explain that there are two experts in the clinical encounter—describe the different but complementary knowledge

Understanding that physician power is not owned, but activated through relational communication and experience

Being aware of power dynamics that might be hindering communication

Affirming patient autonomy, and empowerment

Challenge attitudes that there are right and wrong decisions

Redefine perceptions of a good patient and reassure patients that participation will not result in retribution

Build patients' belief in their ability to take part.

Critical allyship

The "handing" of power in the physician-patient encounter: perceptions from experienced physicians.
Power imbalance prevents shared decision making. *Nicole Joseph Williams*.

43

The Genderbread Person


Gender Identity
 Cis Woman Trans or Non-binary Cis Man

Gender Expression
 Feminine Androgynous or non-binary Masculine

Biological Sex
 Female Intersex Male

Sexual Orientation
 Heterosexual Bisexual Pansexual Homosexual

45



Create a More Inclusive Environment

- Take the time to learn!
- Staff education
- Utilization of surveys
- Inclusive signage and art
- Ask yourself- What voices are we missing
- Did I consider equity?

46

“Only when we consider racism and racial inequality to be persistent and implicit in our norms of practice and the ordering of society and not the exception, can we effectively begin to confront this issue.”




Nuridin A. Marrey G, White AR. Reckoning with histories of medical racism and violence. Lancet. 2020;Oct 3;396(10256):949-951. doi: 10.1016/S0140-6736(20)32032-8. PMID: 33038276. PRACT 196725891.

47

Getting to Justice

- Recognizing that racism is still relevant today, fed by institutional issues that are still relevant
- Affirm racism without intervention white dominant
- Denounce behavior indicators of
- Work towards institutional a al, interpersonal,



Nuridin A. Marrey G, White AR. Reckoning with histories of medical racism and violence in the USA. Lancet. 2020;Oct 3;396(10256):949-951. doi: 10.1016/S0140-6736(20)32032-8. PMID: 33038276. PRACT 196725891.

48



49



50
